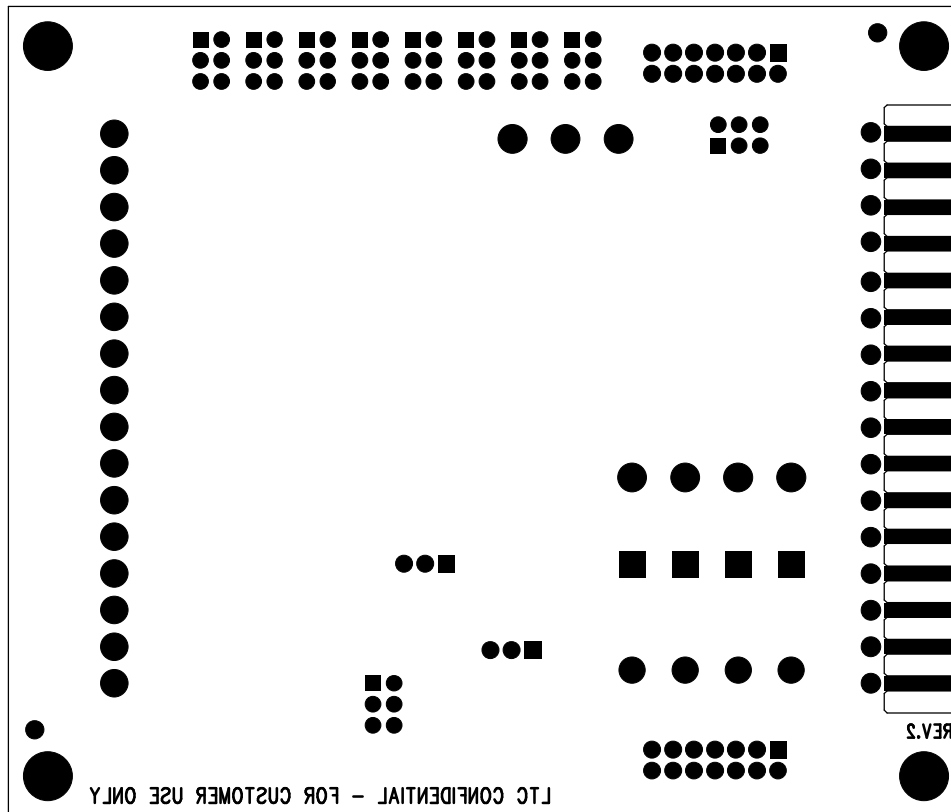


LINEAR TECHNOLOGY DATE: 1-7-10
DC1469B - LTC6801G 12-CELL BATTERY STACK MONITOR



Solder Side

REVISION HISTORY				
ECO	REV	DESCRIPTION	APPR	DATE
	2	PRODUCTION	10N M.	1-7-10

APPROVALS <table border="1"> <tr> <th>DATE</th> <th>INIT.</th> <th></th> </tr> <tr> <td>1-7-10</td> <td>K.L.</td> <td>PCB DES.</td> </tr> <tr> <td>1-7-10</td> <td>10N M.</td> <td>ENG.</td> </tr> </table>		DATE	INIT.		1-7-10	K.L.	PCB DES.	1-7-10	10N M.	ENG.	LINEAR TECHNOLOGY 1830 MCARDY BLVD MILPITAS, CA 95035 PH: (408) 432-1800 LTC CONFIDENTIAL - FOR CUSTOMER USE ONLY	
DATE	INIT.											
1-7-10	K.L.	PCB DES.										
1-7-10	10N M.	ENG.										
TITLE: BOTTOM ASSEMBLY DRAWING 12-CELL BATTERY STACK MONITOR												
SCALE: N/A	FILENAME: DC1469B-5.PCB	TH2 5 of 5	REV. 2									
N/A	IC NO. LTC6801G	DEMO CIRCUIT 1469B	REV. 2									